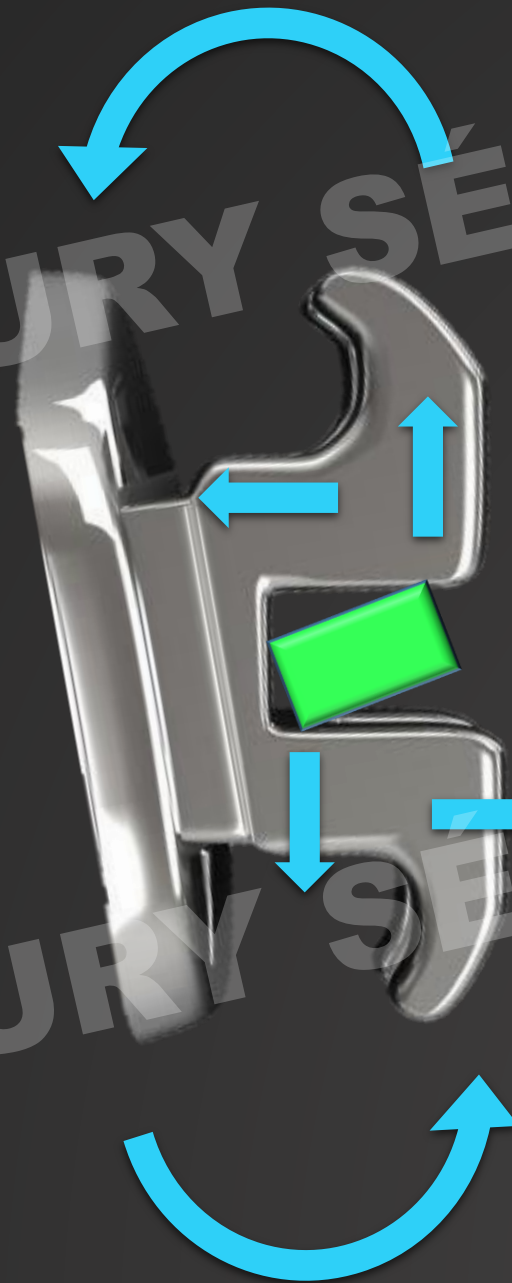


Os **binários** gerados no slot do bracket, são forças **pares**, **paralelas** e de **igual magnitude**, atuando em **direções opostas**.

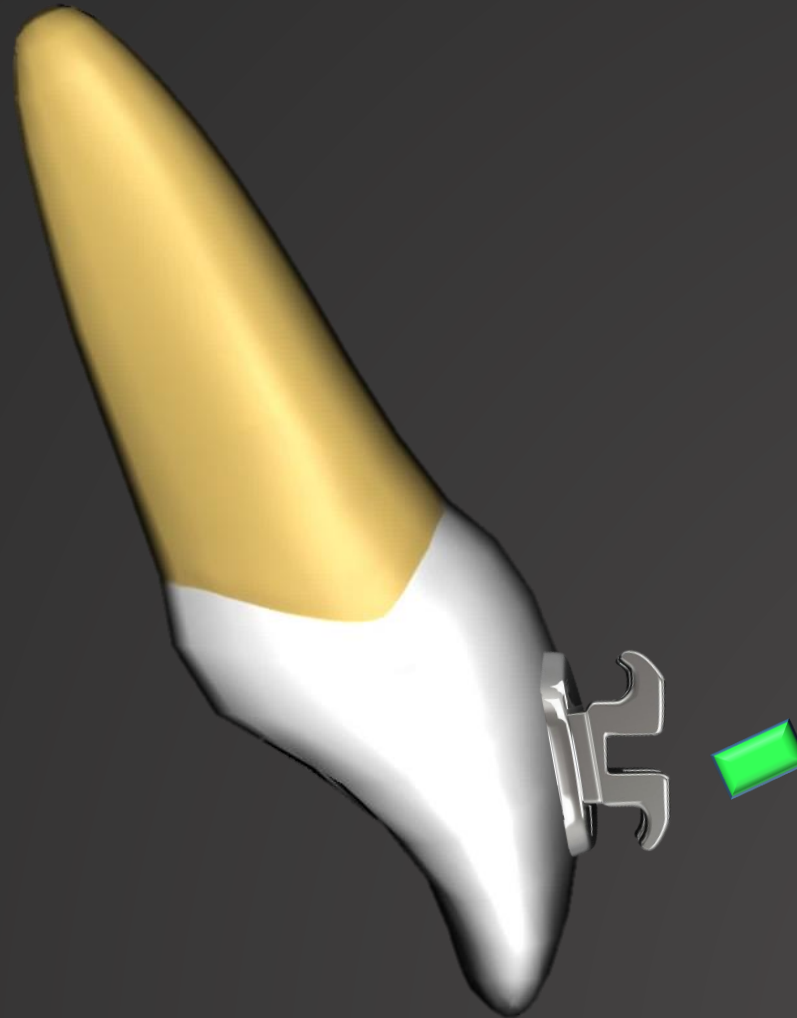


Torque

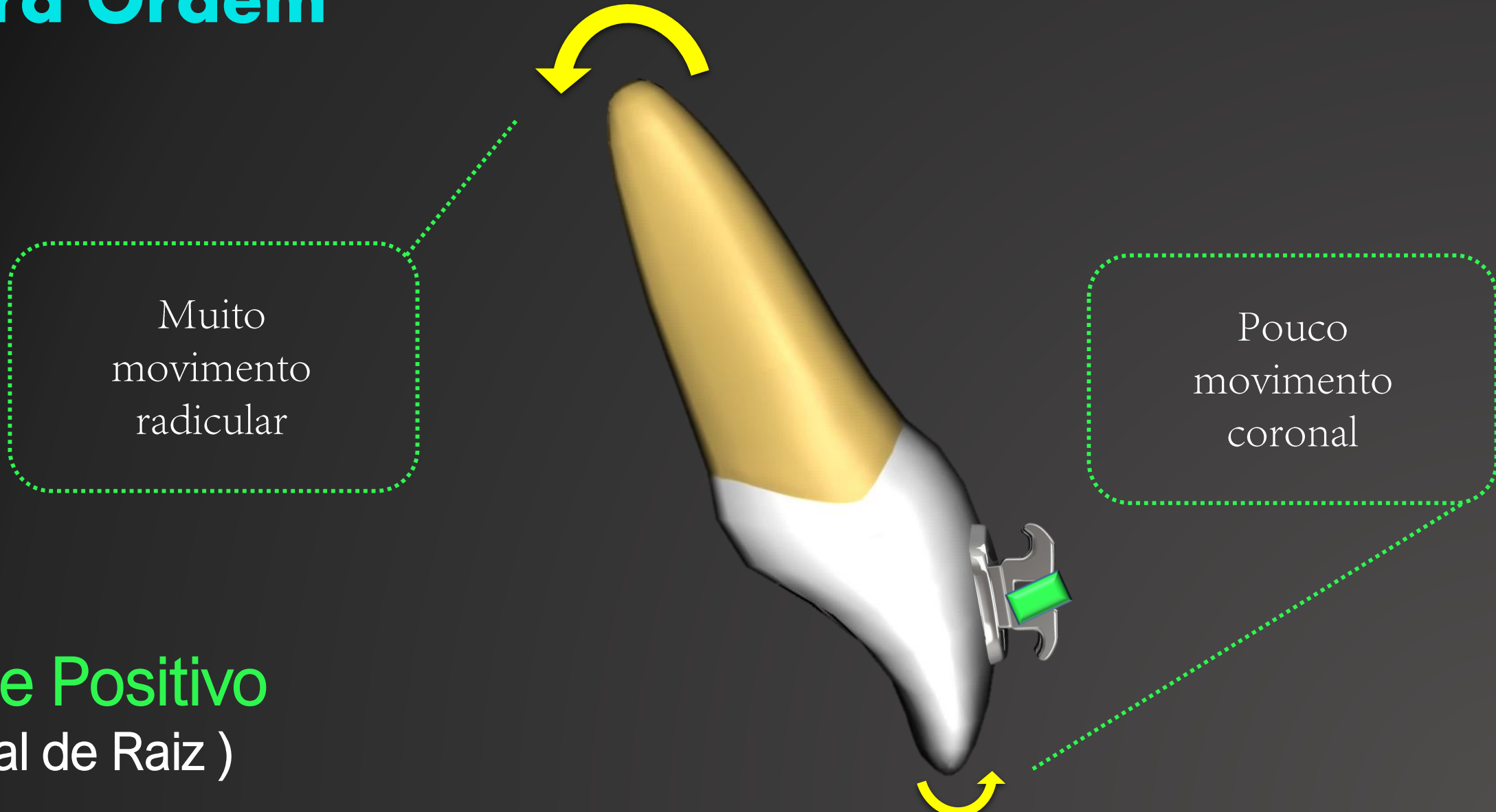
SÉRGIO CURY SÉRGIO CURY SÉRGIO CURY SÉRGIO CURY SÉRGIO CURY SÉRGIO CURY SÉRGIO CURY

Dobras de Terceira Ordem

Torque Positivo
(Lingual de Raiz)



Dobras de Terceira Ordem

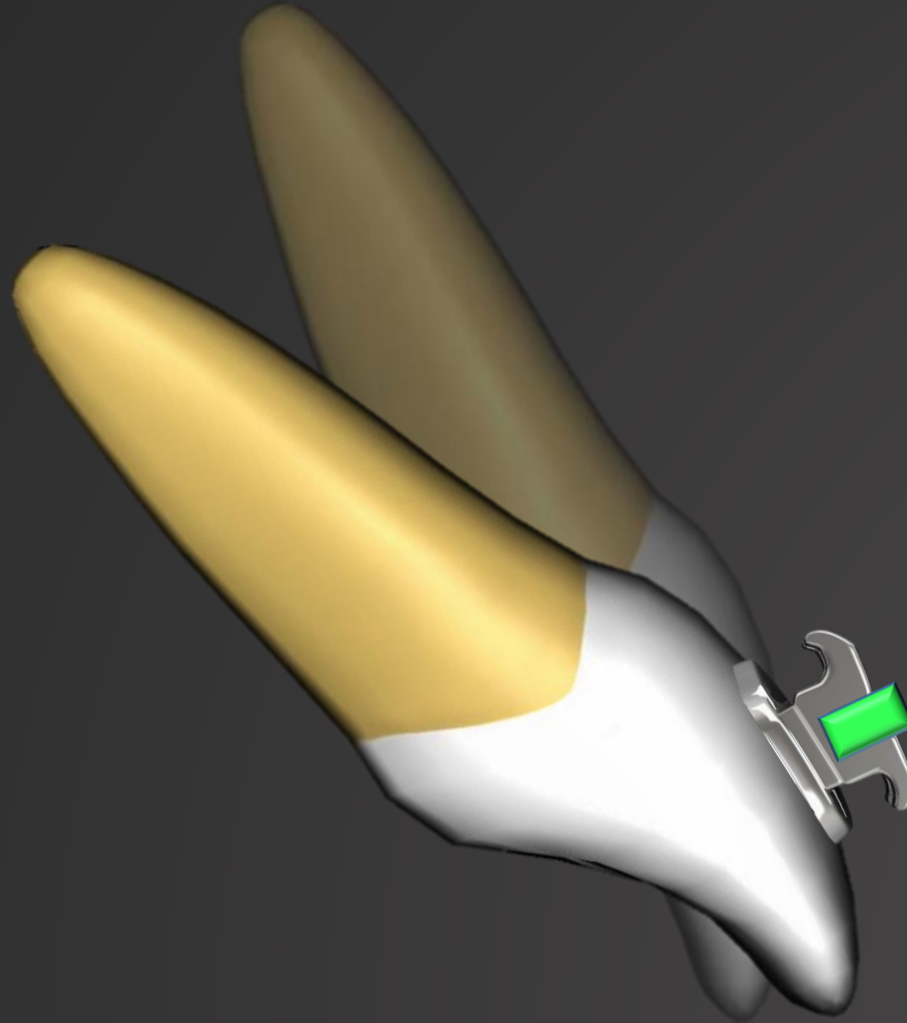


Muito movimento radicular

Pouco movimento coronal

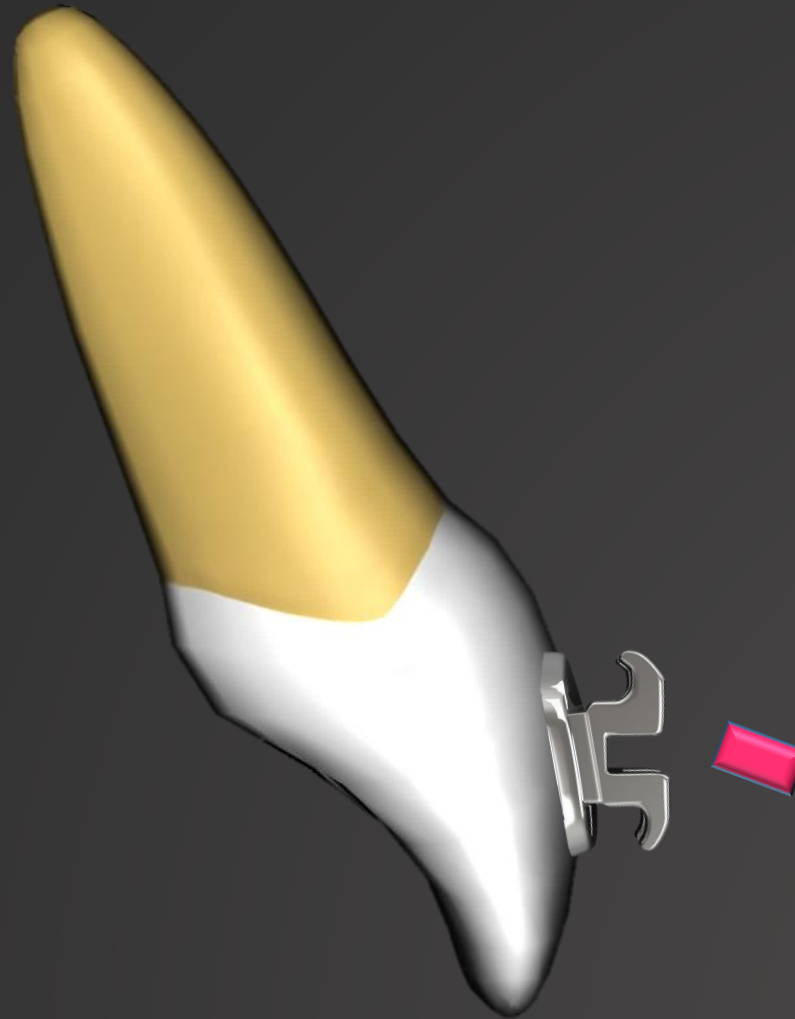
Torque Positivo
(Lingual de Raiz)

Dobras de Terceira Ordem



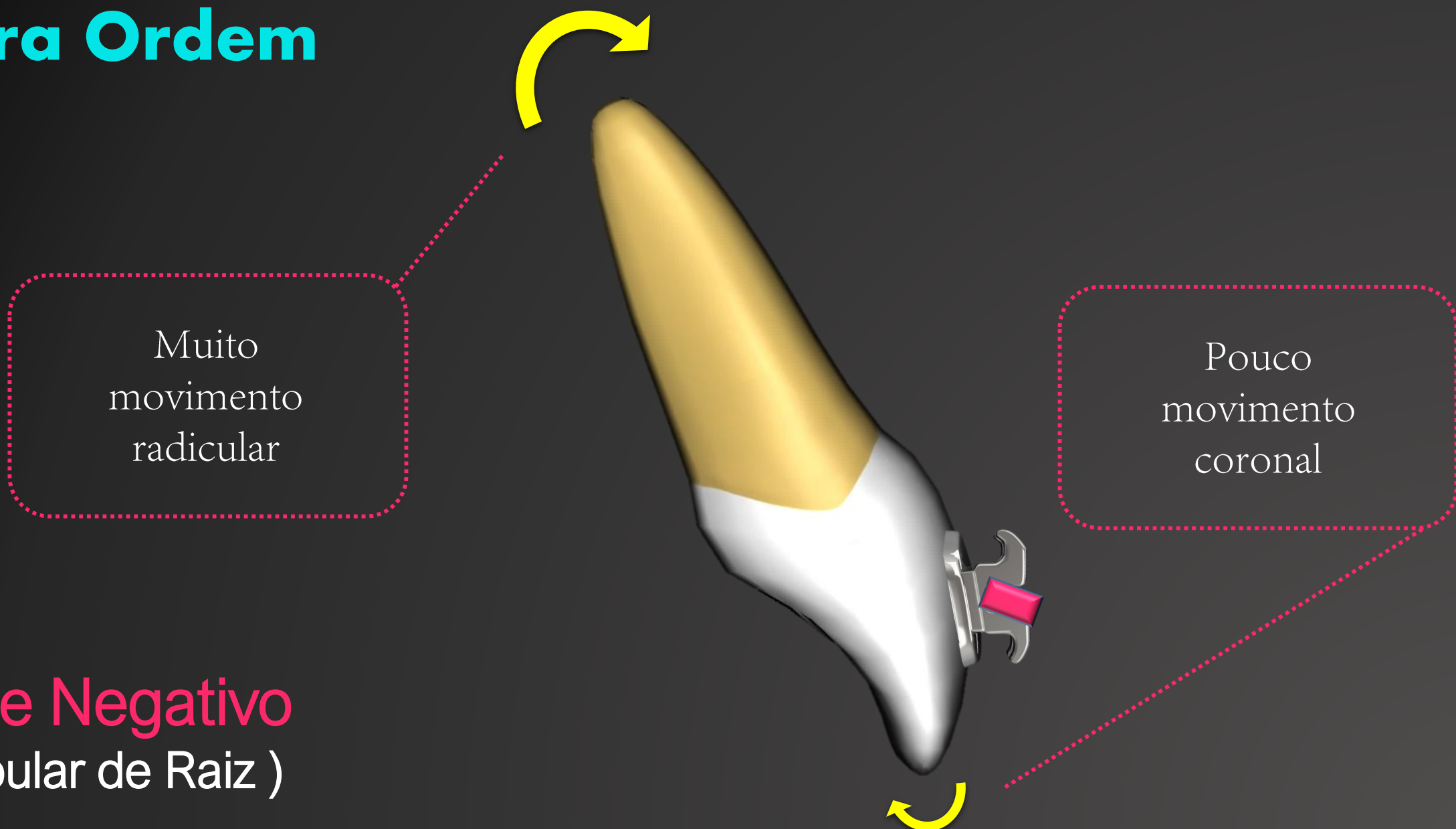
Torque Positivo
(Lingual de Raiz)

Dobras de Terceira Ordem



Torque Negativo
(Vestibular de Raiz)

Dobras de Terceira Ordem



Muito movimento radicular

Pouco movimento coronal

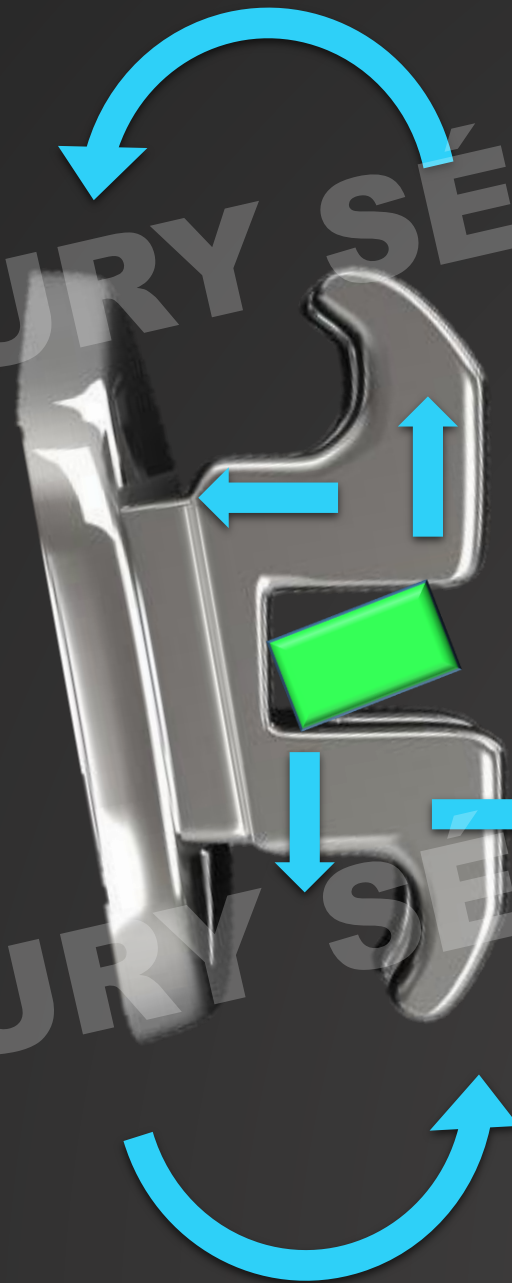
Torque Negativo
(Vestibular de Raiz)

Dobras de Terceira Ordem



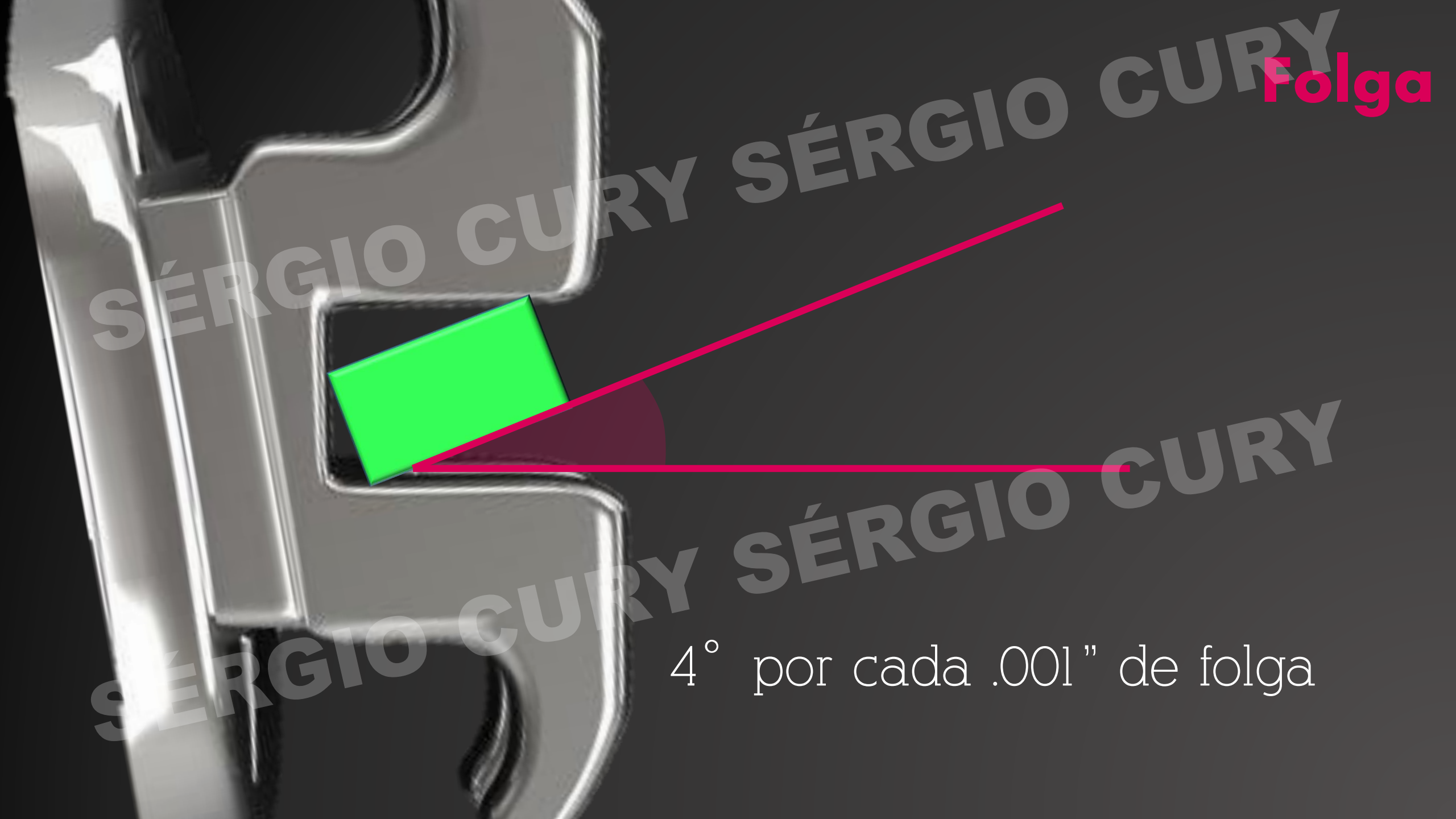
Torque Negativo
(Vestibular de Raiz)

Os **binários** gerados no slot do bracket, são forças **pares**, **paralelas** e de **igual magnitude**, atuando em **direções opostas**.



Torque

SÉRGIO CURY SÉRGIO CURY SÉRGIO CURY SÉRGIO CURY SÉRGIO CURY



Folga

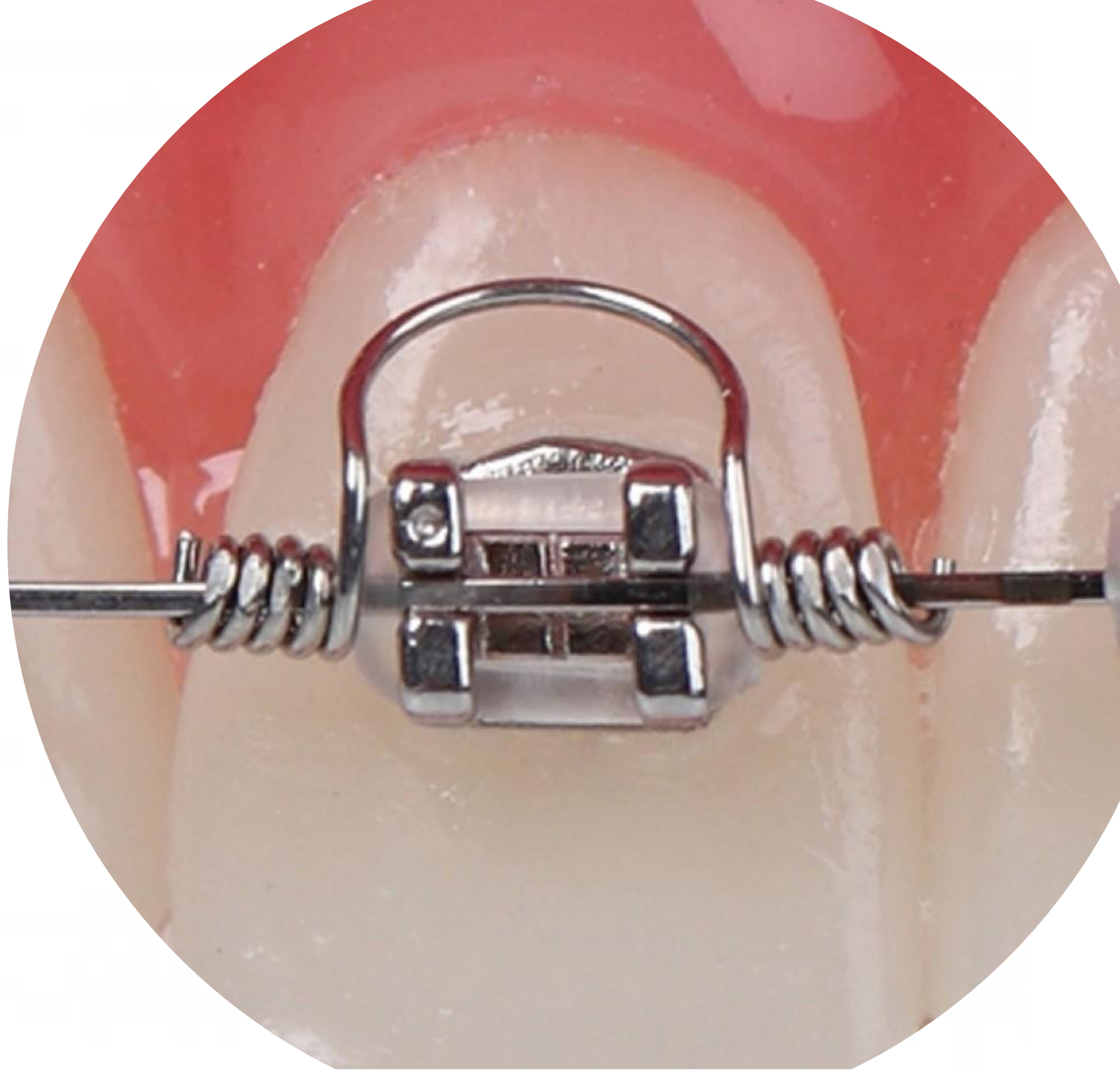
4° por cada .001" de folga

15° de Torque en el Arco



SÉRGIO CURY SÉRGIO CURY

SÉRGIO CURY SÉRGIO CURY



- CASO 1





SÉRGIO CURY SÉRGIO CURY

SÉRGIO CURY SÉRGIO CURY

S E R G I O C U R Y

S É R G I O C U R Y





Próxima

Parar escaneamento



Simulação



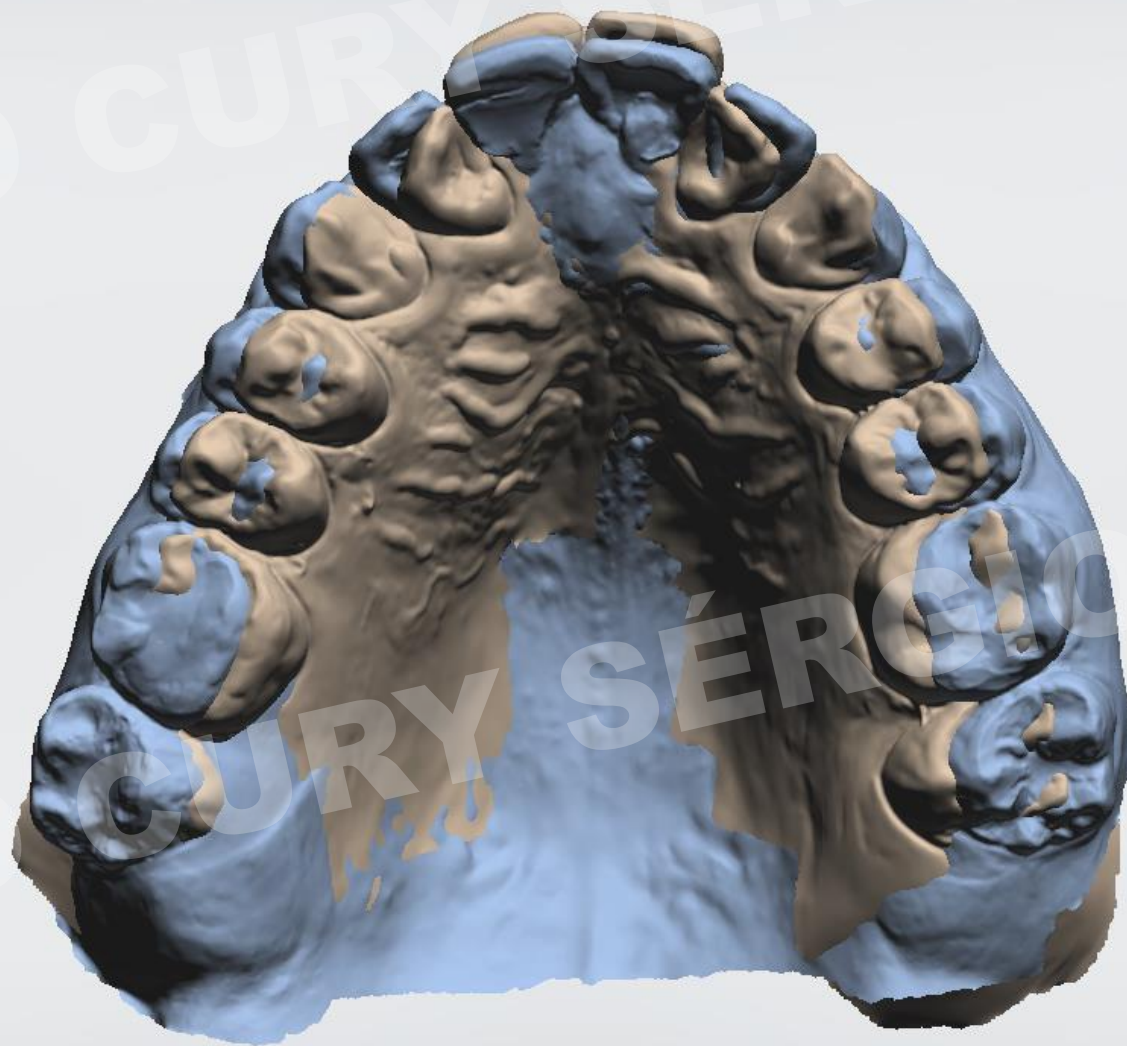
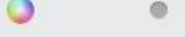
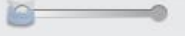
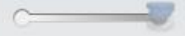
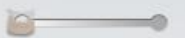
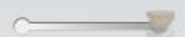
Scan comparison



Corta transversal

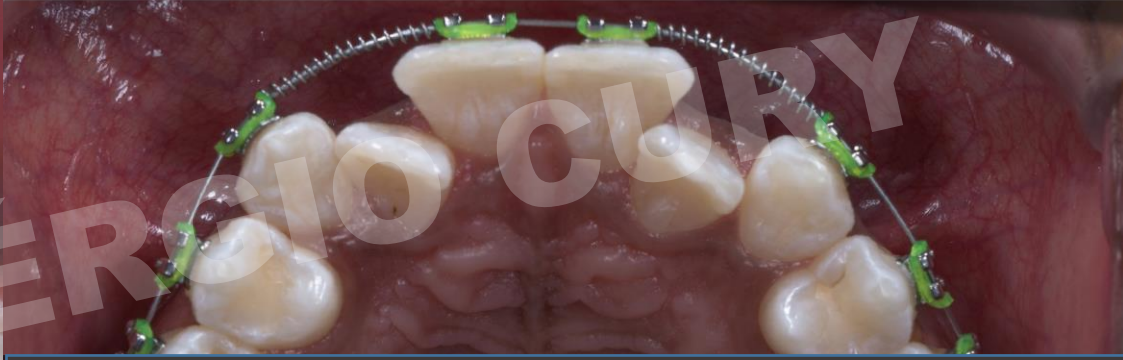
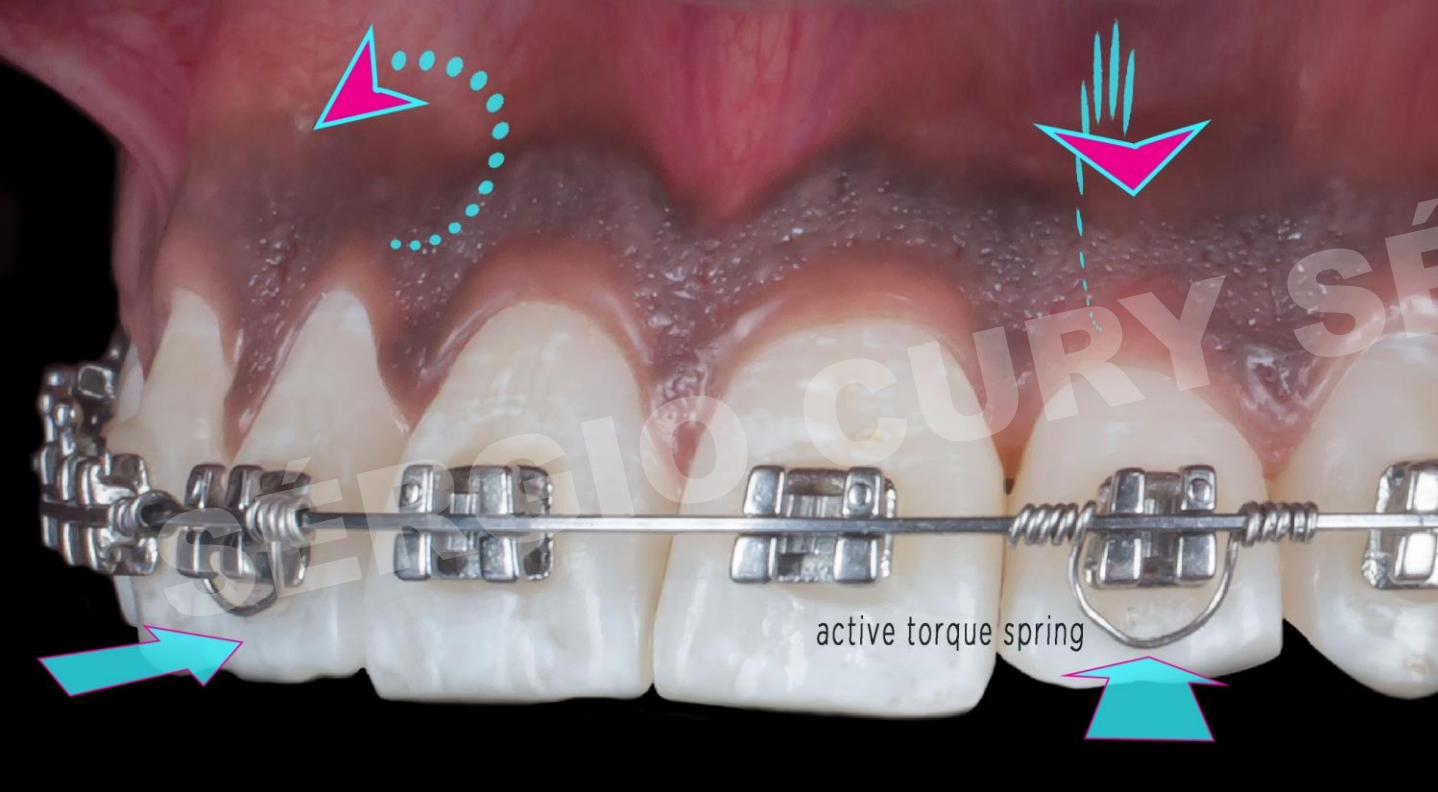


C. D. A. F. Fari



SÉRGIO CURY SÉRGIO CURY SÉRGIO CURY SÉRGIO CURY

- CASO 2



S E R G I O C U R Y S E R G I O C U R Y

Josimara Leopoldino
Jefferson de Melo

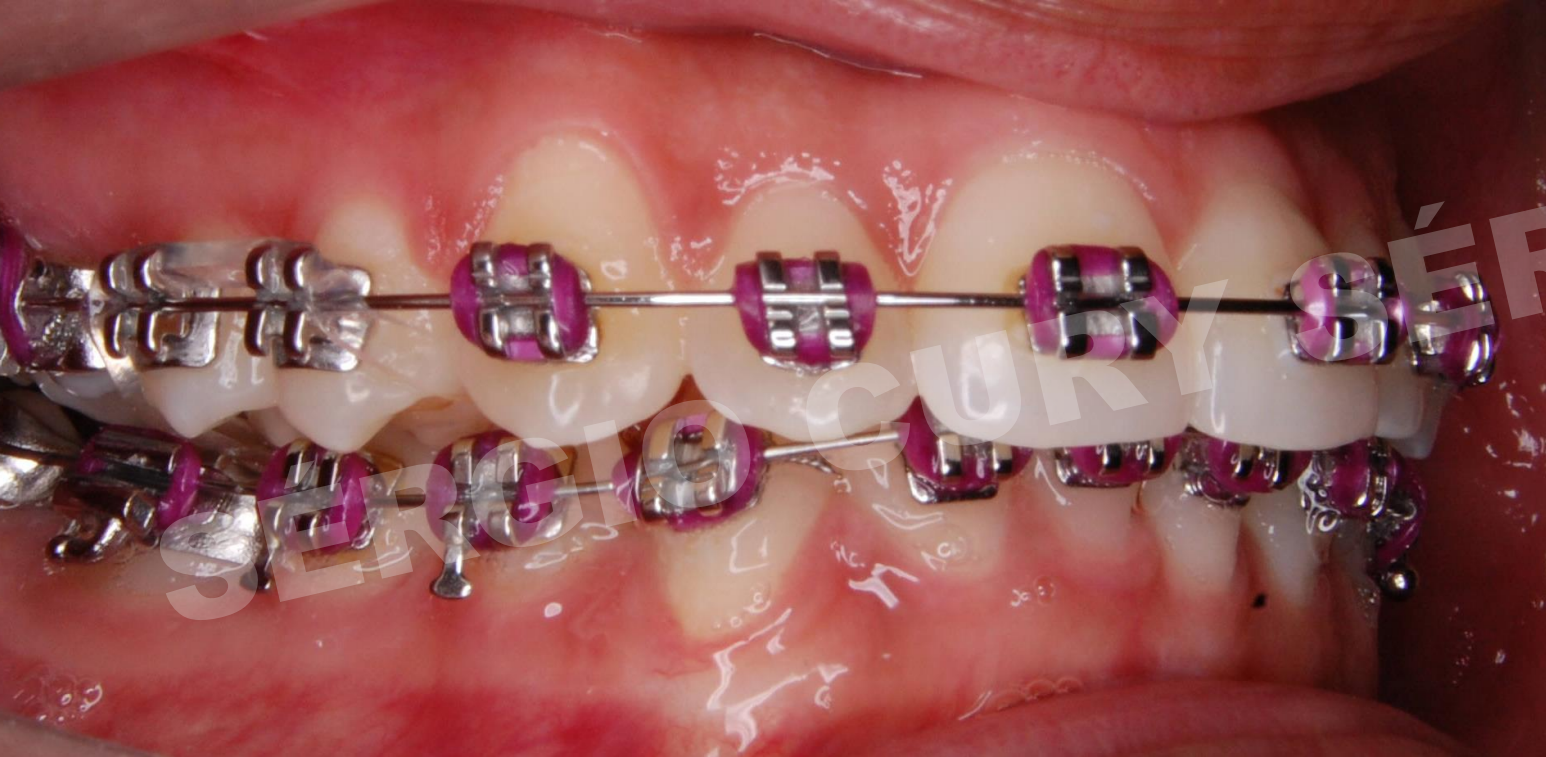


S E R G I O C U R Y S E R G I O C U R Y

Josimara Leopoldino
Jefferson de Melo



- CASO 3





SÉRGIO CURY SÉRGIO CURY

SÉRGIO CURY SÉRGIO CURY

• CASO 4





