

E o seio Maxilar?

- 1,5 X 8mm
- 1,5mm cortical

- 2 X 12mm
- 2,0mm cortical



The Clinical Significance of Sinus Membrane Perforation During Augmentation of the Maxillary Sinus

Leon Ardekian, DDS, Efrat Oved-Peleg, DMD,†
Eli E. Mactei, DMD,‡ and Micha Peled, DMD, MD§*

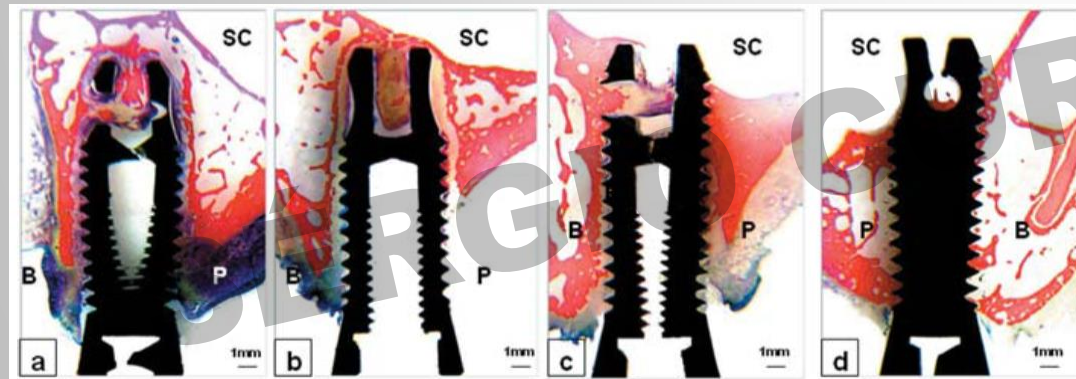
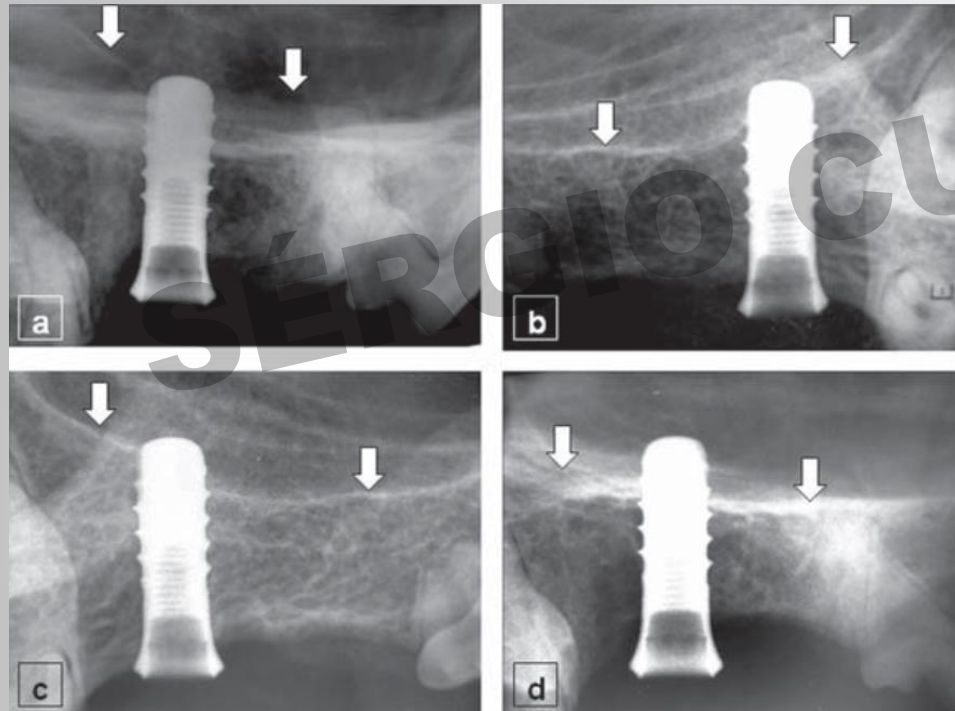
J Oral Maxillofac Surg 64:277-282, 2006

The occurrence of iatrogenic sinus membrane perforations during surgery does not seem to be related to sinusitis in healthy people. Large perforations of the maxillary sinus membrane might result in a discharge of bony fragments into the maxillary sinus and thus cause sinusitis.

“Taxa de sucesso **não teve diferença** estatisticamente significativa entre quando houve ou não **perfuração da membrana sinusal.**”

Experimental study on penetration of dental implants into the maxillary sinus in different depths

16 implantes - 8 cães
 Biópsia e RX após 5 meses



	0mm	1mm	2mm	3mm
Células inflamatórias	✗	✗	✗	✗
Neoformação óssea	✓	✓	✗	✗
Recobertura da membrana	✓	✓	✗	✗

Estabilidade = todos grupos

Influence of orthodontic mini-implant penetration of the maxillary sinus in the infrazygomatic crest region

60 mini-implantes IZC

78,3% penetração no seio maxilar

3,3% insucesso (penetração > 3mm)

Bicorticalização aumenta estabilidade

>1mm de penetração = espessamento

