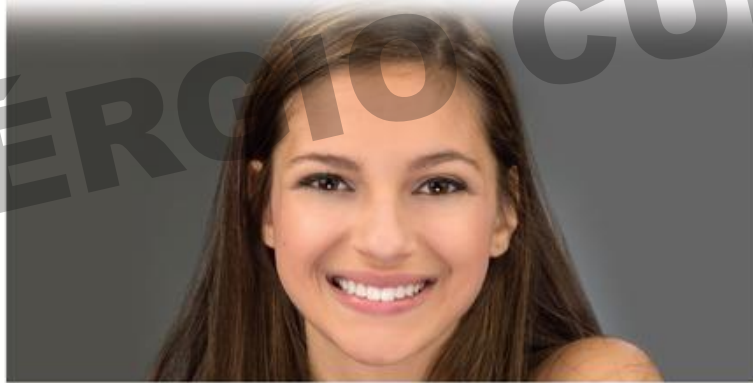


AJO-DO

Volume 151
Number 5
May 2017

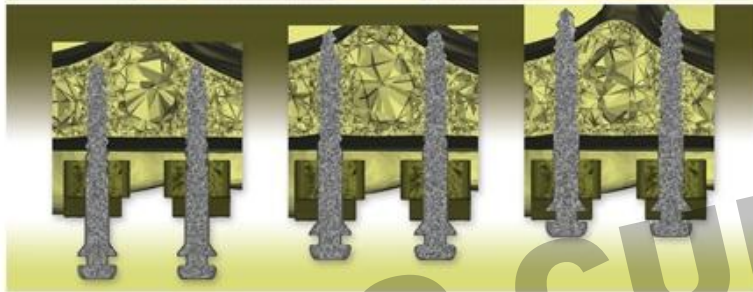
American Journal of Orthodontics
& Dentofacial Orthopedics



Monocortical

1mm Bicortical

2.5mm Bicortical



Effects of monocortical and bicortical mini-implant anchorage on bone-borne palatal expansion



Dentistry's
First Specialty

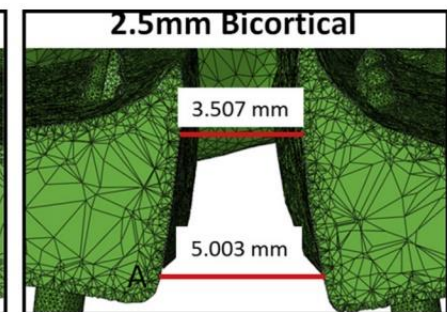
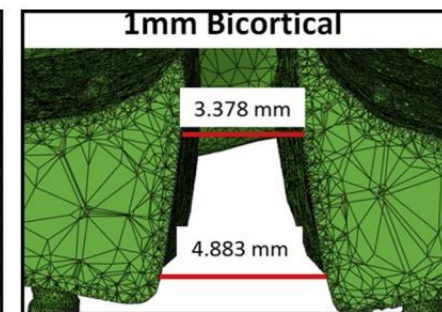
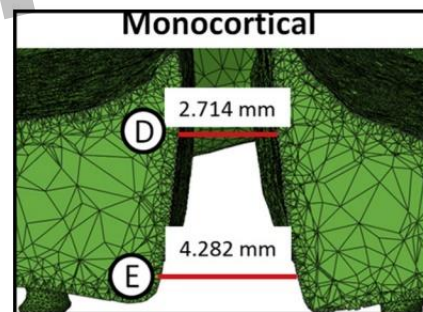
Official Publication of the
American Association of Orthodontists, its constituent societies, the American Board of Orthodontics,
and the College of Diplomates of the American Board of Orthodontics

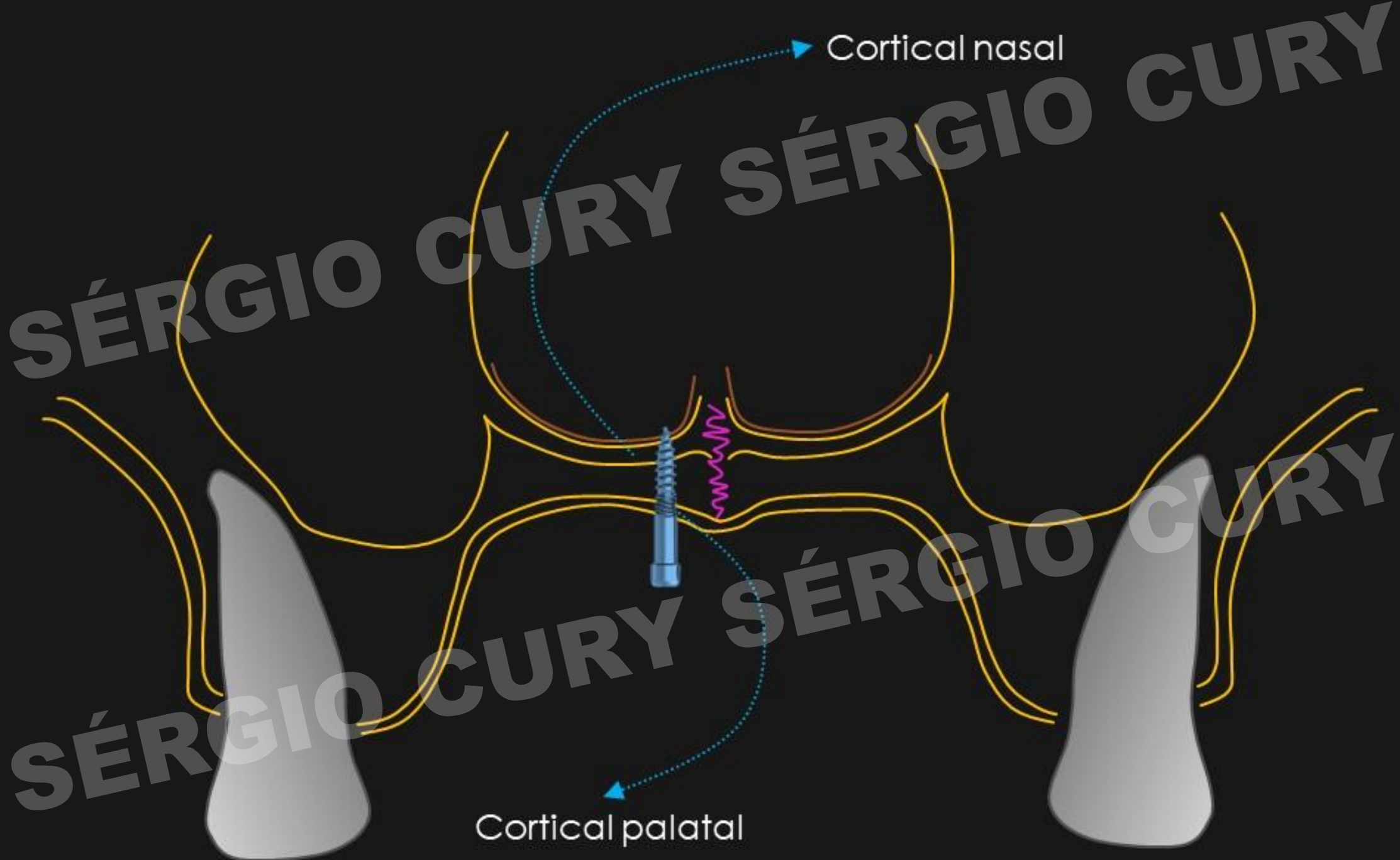
Published by Elsevier, Inc. | www.ajodo.org

ISSN 0889-5406

Bicortical mini-implant anchorage results in improved mini-implant stability, decreased mini-implant deformation and fracture, more parallel expansion in the coronal plane, and increased expansion in bone-borne palatal expansion.

Lee, Moon & Hong 2017







SÉRGIO CURY SÉRGIO CURY SÉRGIO CURY
SÉRGIO CURY SÉRGIO CURY

IZC
BICORTICAL



